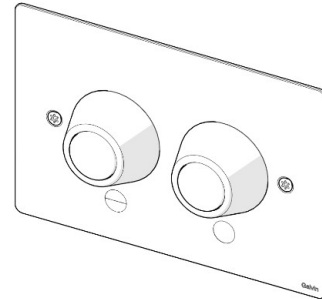


Product Installation Guidelines and Scope of Use

Version 1, 23 July 2025, Page 1 of 3
Document No. 656514

SS Dual Flush Plate Assembly for Pneumatic Inwall Cistern with Conical Buttons



PRODUCT CODE

- 656514

SPECIFICATIONS

- Face plate assembly features pneumatic dual flush push activation buttons for CIST19-PNEU-2 Slim-Line Inwall Cistern.
- Conical buttons with smooth inner surfaces for ease of use.
- 2mm thick, brushed stainless steel faceplate.

WARNINGS: Special attention to be paid on notes, photos, images, or drawings of assembly steps marked with the warning symbol.

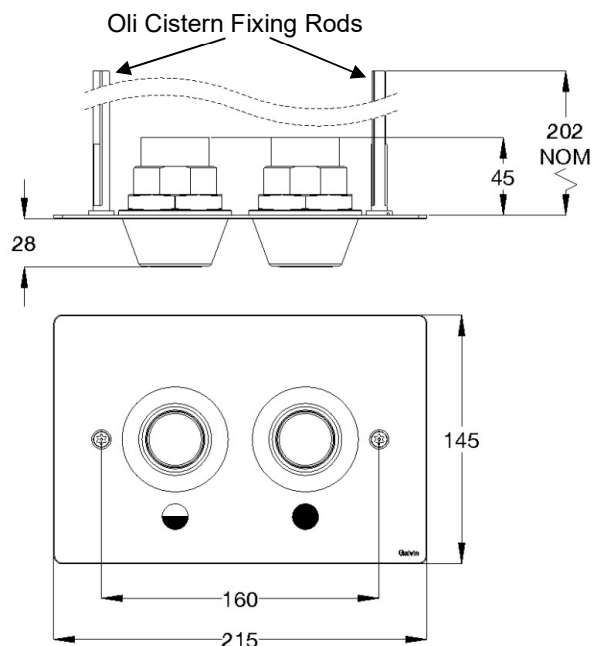


TECHNICAL DATA

Activation	Push Button
Connections	Pneumatic
Finish	Brushed Stainless Steel

NOTE: Galvin Engineering continually strive to improve their products. Specifications may change without notice.

DIMENSIONS



TOOLS REQUIRED

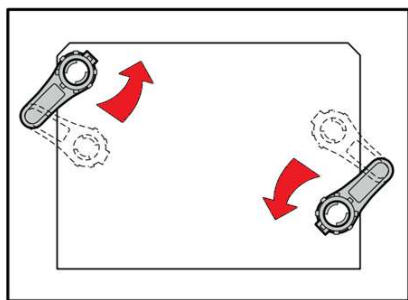
Flat Head Screwdriver

Post-torx key

Silicon Sealant

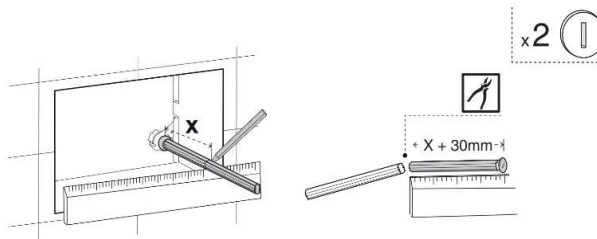
INSTALLATION

INSTALLATION COMPLIANCE: Galvin Engineering products must be installed in accordance with these installation instructions and in accordance with your local regulatory requirements. Water and/or electrical supply conditions must also comply to the applicable national and/or state standards. Failing to comply with these provisions shall void the product warranty and may affect the performance of the product.



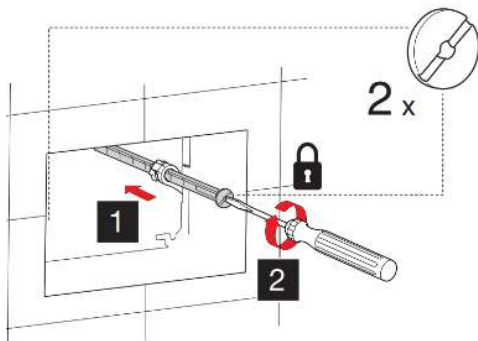
1. Prepare the fixing plate.

- Position the fixing rod holders as shown.



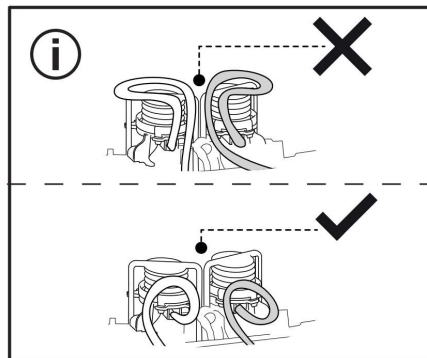
2. Cut the fixing rods to correct size.

- Measure the required length and cut the excess.



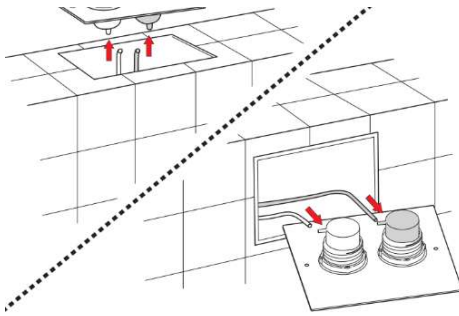
3. Secure the fixing rods.

- Insert the fixing rods into the fixing plate to the correct depth.
- Turn the lock to secure the fixing rods in place.



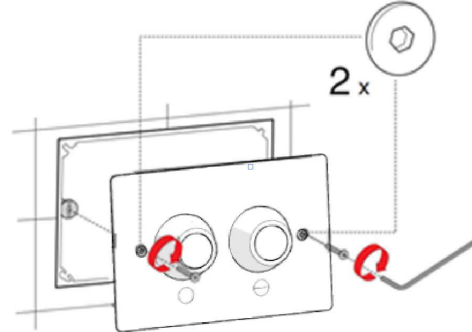
4. Check pneumatic tubes (provided with cistern).

- Ensure the pneumatic connection tubes are not tangled and are in good condition.
- Cut any excess tube length.



6. Connect the pneumatic tubes to the push buttons.

- Ensure the tube is connected to the correct button (half or full flush).
- Check if the connections are tight and secure.
- Check if both buttons are operational and check the air tubes for leaks.



7. Mount the faceplate.

- Apply a thin bead of silicon on the edge of cut out.
- Mount the faceplate to the wall using the two countersunk torx screws.
- Ensure the screws are securely tightened and the faceplate is mounted flush to the wall.
- Check for correct operation

TROUBLESHOOTING

PROBLEM	CAUSE	RECTIFICATION
Cistern does not flush	No air supplied from air pump	Check air tube for leaks Replace air pump if damaged
	Faulty Push Button	Replace damaged push button
	Incorrect connections	Check all connections

NON-SERVICEABLE PRODUCTS INFORMATION

Push Button, Air Pump, Face Plate

These items are non-serviceable products. If damaged, they must be replaced.
If there appears to be any problems with these items, please contact Galvin Engineering.

Note: Before attempting to replace any of these items check that you have access to re-run the connection leads. If you do not have access or you have any doubts, please contact Galvin Engineering for advice before commencing replacement.

WARRANTY

Galvin Engineering products are covered under our Manufacturer's Warranty. Galvin Engineering products must be installed in accordance with the installation instructions and in accordance with AS 3500 and NCC Volume Three, relevant Australian Standards and local authorities applicable to product being installed. Water and electrical supply conditions must also comply to the applicable national and/or state standards, failing to comply with these provisions may void the product warranty and affect performance of the product.

Please visit www.galvinengineering.com.au to view the full warranty, our Installation Compliance and Maintenance & Cleaning information as well as any other additional information.

Within Australia: 1300 514 074 Outside Australia: P: +61 (0)8 9338 2344

F: +61 (0)8 9338 2340

sales@galvinengineering.com.au

www.galvinengineering.com.au

ABN: 78 008 719 382

PERTH | SYDNEY | MELBOURNE | BRISBANE | ADELAIDE

